

# Achieving end-to-end shipment visibility using Mulesoft for a leading global Chemical Distributor



ATTENTION. ALWAYS.



**aspire**  
SYSTEMS 

*attention. always.*

## ABOUT THE CUSTOMER

The customer is one of the leading chemical distributors extending their service in various industries such as personal care, food ingredients, energy, and pharma ingredients to more than 100,000 active customers across geographies. The customer operates a network of about 600 distribution facilities throughout North America, Latin America, Europe, and the Asia-Pacific region.



## CHALLENGES

The customer faced both business and technical challenges in tracking shipment and delivery status. Challenges faced by the client before they approached Aspire

## BUSINESS CHALLENGES

The customer wanted to attain full end-to-end transportation visibility in terms of tracking shipment related activities, such as:

- Advanced pickup notifications
- En route status updates, including delay notifications
- Delivery completion status for both Less than Truckload (LTL) and Truckload (TL)

## TECHNICAL CHALLENGES

Existing technology provider (10-4) does not support LTL and TL shipments

## SOLUTION

---

Aspire Systems was familiar with the existing functionalities of the customer as we have been previously handling their bulk shipment for 10-4. Our extensive experience in handling their supply chain shipments for both purchase and sales orders gave us unique insights into their needs and requirements.

After careful analysis, we proposed a comprehensive Advanced Visibility Solution that can integrate seamlessly into their Oracle Transportation Management (OTM) system.

From the modular set of available API-based integration solutions, they immediately implemented Tracking and Exception Management to improve visibility of their LTL and TL operations.

Aspire's existing and well-established APIs Integration architecture helped the customer easily to accommodate the project within a short span of time.

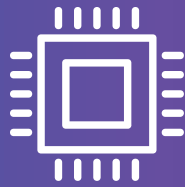
Best practices followed:

- Reusable three layer architecture
- Best Auditing enabled



## TECHNOLOGY SNAPSHOT

---



### Tools:

Mulesoft and SQL Server Database,  
SQL Server hosted in Cloud EC2  
instance, Mulesoft Anypoint Cloud  
Platform, OTM Cloud, Project44 Cloud

### Languages:

RAML

## RESULTS AND ROI

---

- Increased time and money savings
- Eliminated manual process
- Executed customer centric transportation
- Enabled logistics initiatives
- Advanced dispatching
- Advanced visibility to the carriers
- Tracked en route Shipment – Updated every 15 minutes
- Notified delayed delivery – Email notification of potential OTD delays
- Delivery Confirmation – Date and time
- Retrieved Post Delivery Document
- Future Block chain capabilities through active API data flows

## FUTURE IMPACT

---

The customer can easily accommodate more Carriers to their business for both LTL and TL with the solution provided by Aspire Systems.



www.aspiresys.com



ATTENTION. ALWAYS.



## ABOUT ASPIRE

Aspire Systems is a global technology services firm serving as a trusted technology partner for our customers. We work with some of the world's most innovative enterprises and independent software vendors, helping them leverage technology and outsourcing in our specific areas of expertise. Our core philosophy of "Attention. Always." communicates our belief in lavishing care and attention on our customer and employees.

SINGAPORE  
+65 3163 3050

NORTH AMERICA  
+1 630 368 0970

EUROPE  
+44 203 170 6115

INDIA  
+91 44 6740 4000

MIDDLE EAST  
+971 50 658 8831

For more info contact  
info@aspresys.com or visit www.aspiresys.com